

John Long Middle School

Longhorn Dress Code

WARNING: The District School Board of Pasco County has determined that failure to follow these guidelines will result in disciplinary action!



Students shall wear modest clothing. Sexually implicit or explicit clothing, bikinis, tank tops, leggings, jeggings, sleepwear including pajamas, spandex clothing, (kinds of clothing usually worn at beaches and while engaging in recreation activities) are not appropriate for school.



Students may wear shorts and skirts as long as they are **no more than 4” above the knee.**

The Same rule applies to jeans with holes, leggings and dresses. Students may wear jeans with holes that are no more than 4 inches above the knee.



Students’ clothing shall be worn appropriately with **pants worn securely at the waist** and with **no abdomen/back, side skin or underwear exposed.**



Blouses, shirts, and sweaters cannot dip below a line formed between the right and left armpit. **Muscle shirts, tank tops, shirts with spaghetti straps, and strapless tops or see through tops are not acceptable.** Tank Tops underneath see through or lace shirts are not permitted



Tops must be long enough **to clearly overlap the belt line or stay tucked in** during the course of normal movement throughout the school day. **NO** underwear should be exposed.

Students shall not wear hats or head coverings on the school campus during the regular school day unless previously approved for medical or religious reasons or special school activities by the Principal.



Students shall wear shoes for foot protection and hygienic reasons while on school grounds or on school transportation. **Slippers are not acceptable.**



Decorations, symbols, mottos, or designs imprinted or attached to the body or clothing which are **offensive to good taste** or the maintenance of decorum, or which **advertise tobacco, alcohol, drugs,** or which identify them as members of secret antisocial groups or gangs shall not be worn to school or school functions. Facial piercing (nose, mouth, lip, tongue and eyebrow) are not appropriate at Dr. John Long Middle School.



Wallet chains or dog collars shall not be permitted.

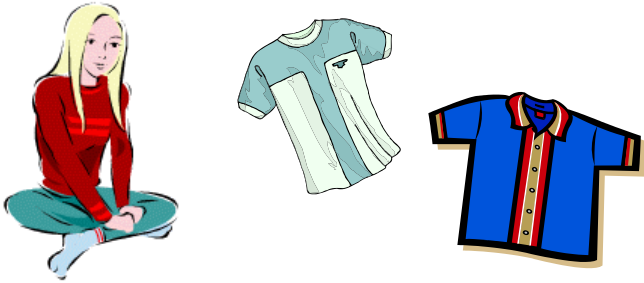
The Principal, or designee, shall determine the appropriateness of dress and appearance. The Principal, or designee, will make the decision if a student’s appearance meets school and community standards. **The Principal’s decision on the appropriateness of dress is final.**

Special Note: A student in violation of the dress code will be required to change into appropriate clothing before returning to class. If necessary, the student will contact parents to provide the appropriate clothing. The student will receive a letter documenting the infraction. A discipline referral will be processed and ISS will be given to students who receive four violation letters.

Do's

Tops:

Do wear modest clothing that keeps the focus on learning!

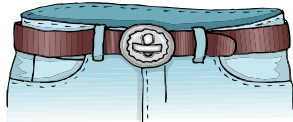


Do wear shirts with appropriate messages!



Bottoms:

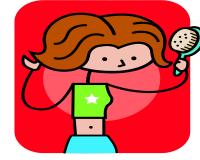
Do wear your pants securely fastened around your waist!



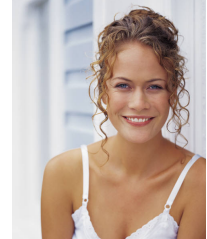
Don'ts

Tops:

Don't wear clothes that show your belly or lower back!

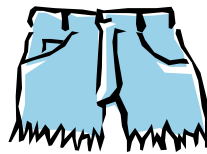


Don't wear tops with spaghetti straps, tops that are strapless, or tanktops!



Bottoms:

Don't wear shorts & skirts that are 4 inches or more above the knee!



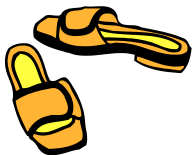
Don't wear pajamas to school!



Don't wear tight sweat pants! Don't wear holes in jeans without leggings underneath!

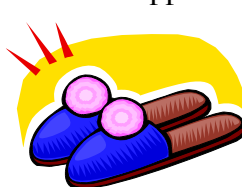
Footwear:

Do wear shoes that protect your feet!



Footwear:

Don't wear slippers!



***ELECTRONIC DEVICES, ESPECIALLY CELL PHONES, HAVE THE POTENTIAL TO DISRUPT THE LEARNING ENVIRONMENT. ALL ELECTRONIC DEVICES MUST REMAIN OFF AND UNACTIVATED DURING THE SCHOOL DAY. STUDENTS WITH ELECTRONIC DEVICES, INCLUDING CELL PHONES, THAT ARE TURNED ON/OR IN USE DURING THE REGULAR SCHOOL DAY, WILL HAVE THE DEVICE CONFISCATED!**