

# John Long Middle School

## Longhorn Dress Code 8-13-21

The District School Board of Pasco County has determined in order to promote an orderly learning environment in our schools while preparing all students for later success in the world of work. The following guidelines for student dress. Failure to follow these guidelines will result in disciplinary action!

**Students shall wear modest clothing** and accessories. Substantially any item that is disruptive to the school setting or is offensive to good taste or the maintenance of decorum. Sexually implicit or explicit images, words or phrases. Advertisements or usage of tobacco, alcohol or drugs. Vulgarity in any form. Violent images. Profanity in any form. Pajamas, slippers and clothes that expose underwear, body parts in an indecent or vulgar manner and /or abdomen skin are not appropriate for school.



Clothing must cover the body from one armpit across to the other armpit and down to approximately mid-thigh.

Students' clothing shall be worn appropriately with **pants worn securely at the waist** and with **no abdomen/back, side skin or underwear exposed**. Jeans or pants with rips or holes that expose undergarments or body parts in an indecent or vulgar manner should not be worn. Leggings, yoga pants spandex, tights or similar clothing may only be worn with a shirt that goes down to the mid-thigh.



Clothing must cover one armpit across to the other armpit between the right and left armpit. Undergarments must not be viewable. **Tops must have straps at 1" inch across.**



Tops must be long enough to **clearly overlap the belt line or stay tucked in** during the course of normal movement throughout the school day. **NO** underwear should be exposed.

**Students shall not wear hats, bandanas, hoodies, or head coverings** on the school campus during the regular school day unless previously approved for medical or religious reasons or special school activities by the Principal.



**Students shall wear shoes for foot protection and hygienic reasons** while on school grounds or on school transportation. **Slippers are not acceptable.**



Decorations, symbols, mottos, or designs imprinted or attached to the body or clothing which are **offensive to good taste** or the maintenance of decorum, or which **advertise tobacco, alcohol, drugs**, or which identify them as members of secret antisocial groups or gangs shall not be worn to school or school functions. Facial piercing (nose, mouth, lip, tongue and eyebrow) are not appropriate at Dr. John Long Middle School.



**Wallet chains or dog collars or similar items are not permitted.** Jewelry that may cause safety issues and /or substantially disrupt the school setting shall not be permitted.

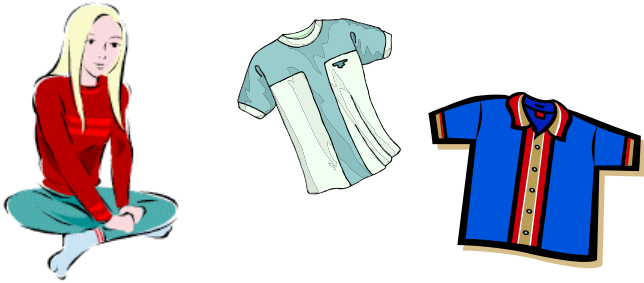
The Principal, or designee, shall determine the appropriateness of dress and appearance. The Principal, or designee, will make the decision if a student's appearance meets school and community standards. **The Principal's decision on the appropriateness of dress is final.**

**Special Note:** A student in violation of the dress code will be required to change into appropriate clothing before returning to class. If necessary, the student will contact parents to provide the appropriate clothing. The student will receive a letter documenting the infraction. A discipline referral will be processed and ISS will be given to students who receive four violation letters.

## Do's

### Tops:

Do wear modest clothing that keeps the focus on learning!

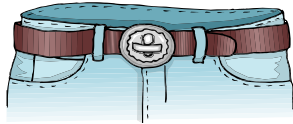


Do wear shirts with appropriate messages!



### Bottoms:

Do wear your pants securely fastened around your waist!



### Footwear:

Do wear shoes that protect your feet!



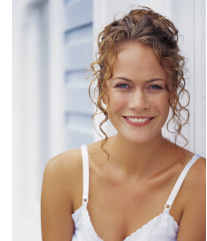
## Don'ts

### Tops:

Don't wear clothes that show your belly or lower back!



Don't wear tops that are strapless, or tanktops! Straps **must** be at least 1"



### Bottoms:

Don't wear shorts & skirts that are higher than **mid-thigh**.



Don't wear pajamas to school!



Don't wear tight sweat pants, leggings, or yoga pants unless the garment over it goes to mid-thigh. Don't wear holes in jeans that show any body parts or expose undergarments or areas that should be covered by undergarments.

### Footwear:

Don't wear slippers!



**\*ELECTRONIC DEVICES, ESPECIALLY CELL PHONES, HAVE THE POTENTIAL TO DISRUPT THE LEARNING ENVIRONMENT. ALL ELECTRONIC DEVICES MUST REMAIN OFF AND UNACTIVATED DURING INSTRUCTIONAL TIME DURING THE SCHOOL DAY. STUDENTS WITH ELECTRONIC DEVICES, INCLUDING CELL PHONES, THAT ARE TURNED OFF DURING INSTRUCTIONAL TIME, WILL HAVE THE DEVICE CONFISCATED!**